

Flat 8 Hova Court, 54-56 Hova Villas

Hove BN3 3DG

Asking Price: £300,000

- DOUBLE BEDROOM
- MODERN DÉCOR
- GOOD SIZE LIVING ROOM
- SEPARATE KITCHEN
- SHARE OF FREEHOLD
- GAS CENTRAL HEATING
- BALCONY
- DOUBLE GLAZED

Whitlock & Heaps are delighted to present to market this one double bedroom flat forming part of the top floor of this purpose built building. Boasting a good size bedroom with large living area having direct access onto the East facing balcony. Benefitting from modern décor throughout and having a separate kitchen.

Bus routes operate locally making public transport throughout the city simple. Church Road is a short walk away, with its vast array of shopping facilities, eateries and cafés. Hove mainline train station is located near by for commutes out of the city. This brought is brought to market with a share in the freehold.

ENTRANCE HALL Two cupboards housing storage, radiator, telecom unit.

KITCHEN Incorporating stainless steel bowl sink with mixer taps and drainer, vinyl work surfaces with cupboards below and matching eye level cupboards, four ring gas hob with oven below and extractor above, space for fridge, freezer and washing machine. 'Worcester' gas fired combination boiler, UPVC double glazed door onto fire escape.

LIVING ROOM Radiator, double glazed door onto balcony.

BEDROOM Fitted wardrobes, UPVC double glazed window with Westerly aspect, radiator.

BATHROOM Comprising panelled bath with shower over, room being fully tiled, pedestal wash hand basin, low level w.c, UPVC double glazed frosted window.

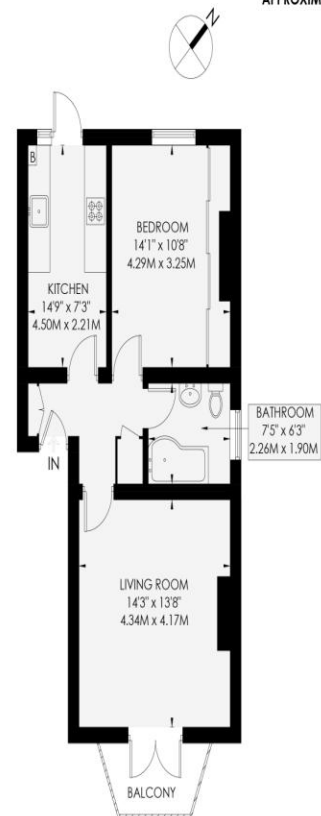
OUTSIDE East facing balcony with room for table and chairs.

OUTGOINGS Share in the freehold
Service charge £150pcm
Lease has 134 unexpired years remaining.

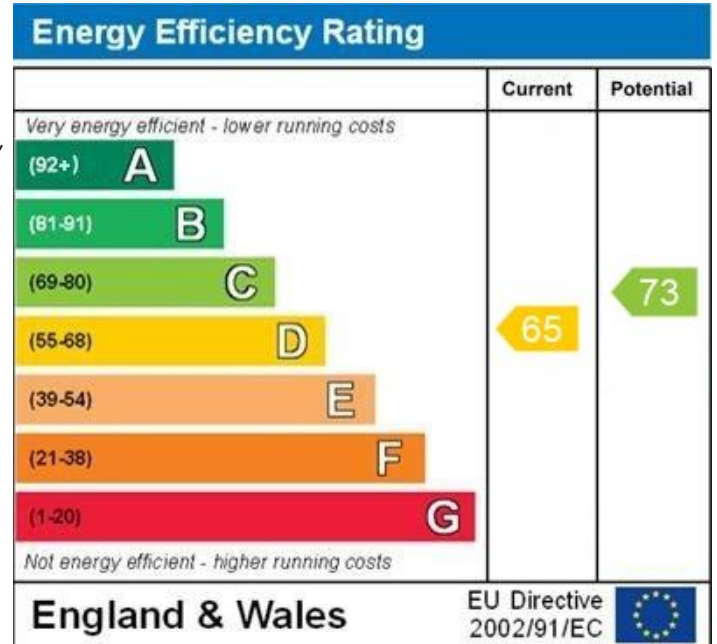
HOVA COURT

HOVE

APPROXIMATE GROSS INTERNAL AREA
54.7 sq m / 589 sq ft



Second Floor
54.7 sq m / 589 sq ft



WWW.EPC4U.COM

Portslade Branch
48 Boundary Road, Portslade BN3 4EF
portslade@whitlockandheaps.co.uk
01273 422706

Hove Branch
65 Sackville Road, Hove BN3 3WE
hove@whitlockandheaps.co.uk
01273 778577



Disclaimer: Whitlock & Heaps have produced these particulars in good faith and they are set out as a general guide. Accuracy is not guaranteed, nor do they form part of any contract. If there is any particular aspect of these details which you require any confirmation, please do contact us, especially if contemplating a long journey. All measurements are approximate. Fixtures and fittings, other than those mentioned above, to be agreed with the seller. Any services, systems or appliances at the property have not been tested.