



# 68 Byron Street

Hove BN3 5BB

Asking Price Of £650,000

- PERIOD FAMILY HOME
- BAY FRONTED
- RETENTION OF SOME PERIOD FEATURES
- THREE BEDROOMS
- SOUTH FACING GARDEN
- POETS CORNER
- EXCELLENT ORDER THROUGHOUT
- GAS CENTRAL HEATING

Whitlock & Heaps are delighted to present to market this bay fronted Victorian family home being sold in excellent standard throughout in the sought after Poets Corner. This family home boasts retention of some period features and a south facing rear garden. Having potential to extend and convert (STNC).

Bus routes operate locally making public transport across the city simple. Portland Road and George Street are both within close proximity, benefitting for their wide array of shopping facilities, eateries and cafés. Hove mainline train station is also close by making commutes out of the city centre simple. You are in the catchment area for various good local schools as well as being close to Hove seafront.

**ENTRANCE** Cupboard housing electrics, corning above, thermostat. radiator.

**LIVING ROOM** Hearth, cupboard housing storage, UPVC double glazed bay window, radiator.

**KITCHEN** Ceramic sink with mixer taps and drainer with tiled splashback, wooden work surfaces with cupboards below and matching eye level cupboards, integrated dishwasher, washer dryer, wine fridge and Hotpoint oven. Four ring induction hob with extractor above, cupboard housing 'Alpha' gas fired boiler, space for double fridge, double doors to south facing rear garden.

**LANDING** Loft hatch above.

**BEDROOM** Fitted wardrobes, UPVC double glazed bay window, radiator.

**BEDROOM** Fitted wardrobe, UPVC double glazed window overlooking garden, radiator.

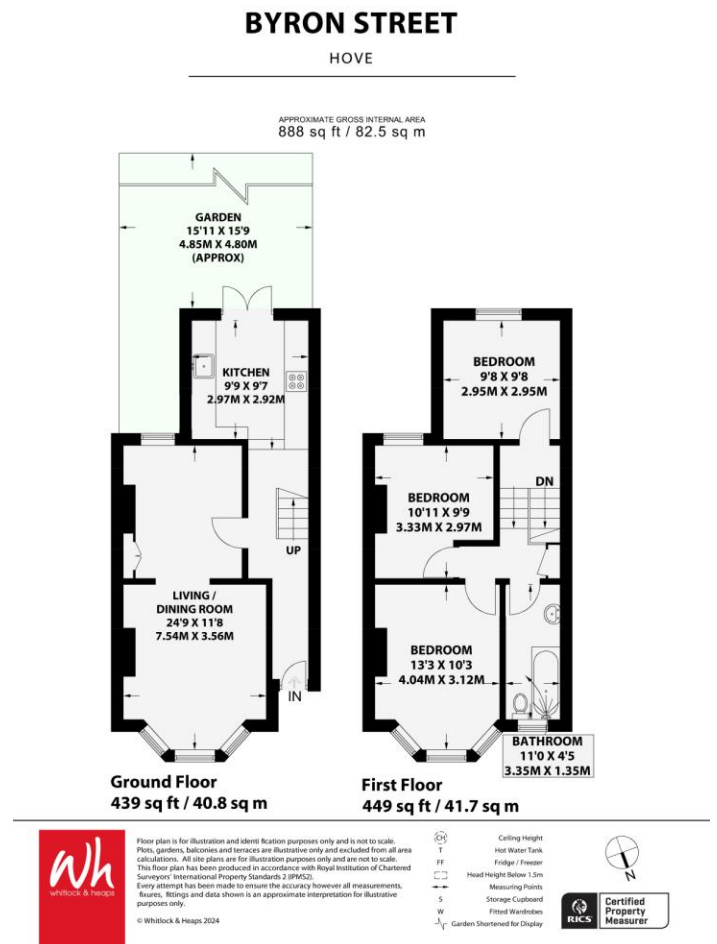
**BEDROOM** UPVC double glazed window, radiator.

**BATHROOM** Comprising bath with shower over, bowl sink, extractor, UPVC double glazed frosted window, fitted heated towel rail, low level w.c.

**OUTSIDE**

**FRONT GARDEN** Patio to front, gas meter, gated entrance.

**GARDEN** Being mainly paved with grass to rear, outdoor electric socket, outside tap.



Portslade Branch  
48 Boundary Road, Portslade BN3 4EF  
portslade@whitlockandheaps.co.uk  
01273 422706

Hove Branch  
65 Sackville Road, Hove BN3 3WE  
hove@whitlockandheaps.co.uk  
01273 778577



**Disclaimer:** Whitlock & Heaps have produced these particulars in good faith and they are set out as a general guide. Accuracy is not guaranteed, nor do they form part of any contract. If there is any particular aspect of these details which you require any confirmation, please do contact us, especially if contemplating a long journey. All measurements are approximate. Fixtures and fittings, other than those mentioned above, to be agreed with the seller. Any services, systems or appliances at the property have not been tested.