



3 The Meadows

Hove BN3 8AS

Asking Price Of £625,000

- VERSATILE 4/5 BEDROOM ACCOMMODATION
- DELIGHTFUL KITCHEN/DINING ROOM
- UTILITY ROOM AND CLOAKROOM
- LIVING ROOM
- BATHROOM
- BEDROOM 5/RECEPTION ROOM
- MATURE GARDENS WITH VIEWS
- OFF STREET PARKING

Whitlock and Heaps are bringing to market this semi-detached property in this elevated position featuring secluded rear gardens offering far reaching viewing over the south downs. The versatile four/five bedroom accommodation is arranged over two floors with a wonderful kitchen/dining room and separate living room. The fifth bedroom is currently used as a second reception room leading onto the garden. The bungalow is located in the heart of this desirable and secluded close and benefits from a garage and off street parking.

ENTRANCE HALL Radiator, coats cupboard.

KITCHEN/DINING ROOM Incorporating stainless steel one and a half bowl sink unit with drainer and mixer tap, adjacent laminate worksurface with cupboards and drawers under, two matching eye-level wall cupboards, inset 4-ring gas hob with stainless steel extractor over, integrated dishwasher, space for fridge/freezer, island with cupboards to one side and seating section to the other, space for table and chairs, two radiators, UPVC double glazed windows and sliding Patio doors to garden.

UTILITY ROOM Incorporating stainless steel sink unit with drainer and mixer tap, adjacent laminate worksurface with cupboards under, tiled splashback, space for freezer and plumbing for washing machine, 'Worcester' wall mounted gas boiler, UPVC double glazed window and door to side.

CLOAKROOM Comprising low level w.c.

LIVING ROOM UPVC double glazed bay window, gas fire with timber mantle over, radiator.

BEDROOM 1 Fitted wardrobes with hanging and shelving space, UPVC double glazed window, radiator.

BEDROOM 3 UPVC double glazed window, radiator.

BEDROOM 5/RECEPTION ROOM 'French' doors to garden, radiator.

BATHROOM White suite comprising corner bath with mixer tap and shower attachment, pedestal wash-hand basin, low level w.c., shower cubicle, tiled walls, two UPVC double glazed windows, fitted cupboard, heated ladder style towel rail.

FIRST FLOOR

LANDING Velux window, eaves storage.

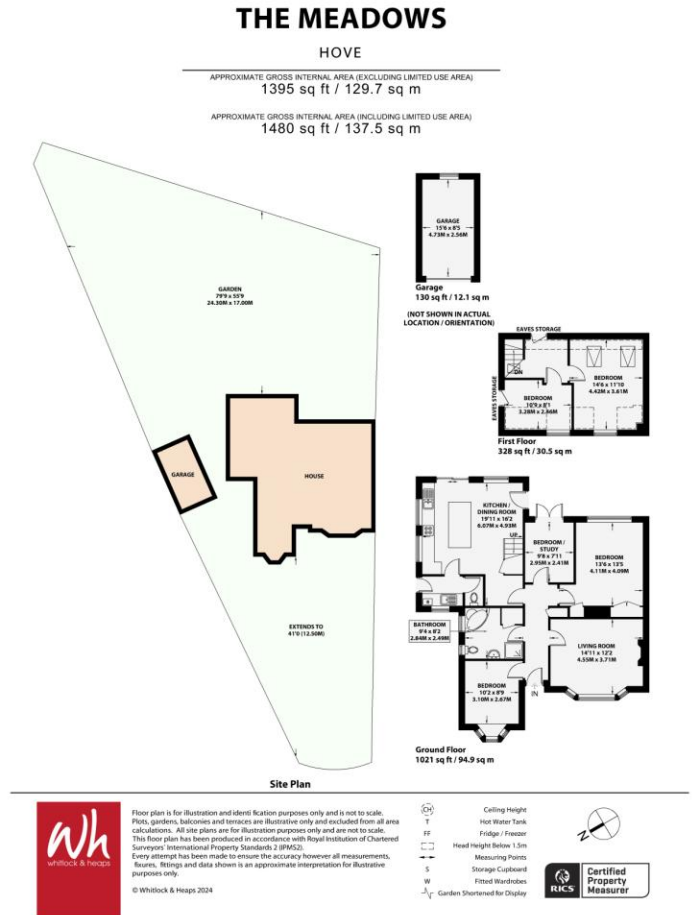
BEDROOM 2 Two velux windows, UPVC double glazed window, radiator.

BEDROOM 4 UPVC double glazed window, radiator, eaves storage.

OUTSIDE FRONT GARDEN Laid to lawn.

OFF STREET PARKING FOR TWO VEHICLES GARAGE Up and over door.

REAR GARDENS Well established being mainly laid to lawn with mature flower and shrub borders, two patio areas, shed, greenhouse, gate offering side access.



Portslade Branch
48 Boundary Road, Portslade BN3 4EF
portslade@whitlockandheaps.co.uk
01273 422706

Hove Branch
65 Sackville Road, Hove BN3 3WE
hove@whitlockandheaps.co.uk
01273 778577



Disclaimer: Whitlock & Heaps have produced these particulars in good faith and they are set out as a general guide. Accuracy is not guaranteed, nor do they form part of any contract. If there is any particular aspect of these details which you require any confirmation, please do contact us, especially if contemplating a long journey. All measurements are approximate. Fixtures and fittings, other than those mentioned above, to be agreed with the seller. Any services, systems or appliances at the property have not been tested.